

# PortfolioAnalyst

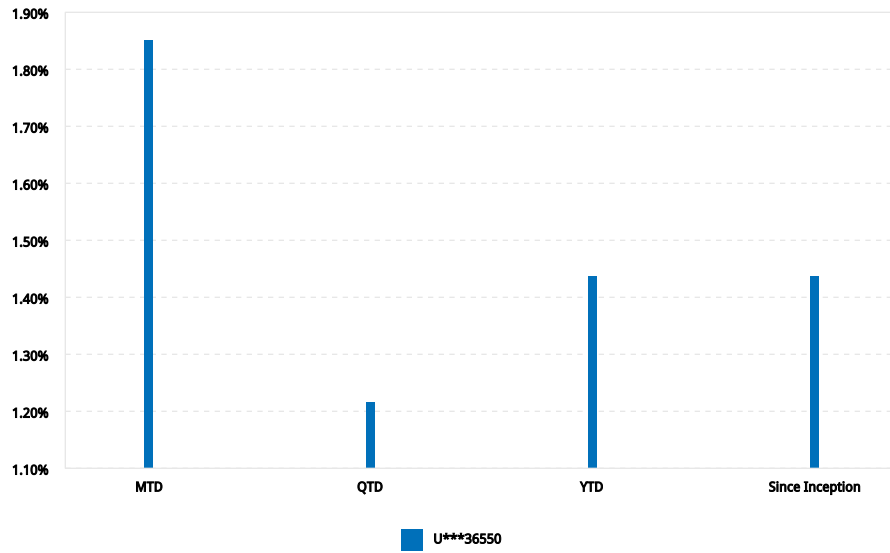


**NAME:** Vector Grove Fund, L.P.  
**ACCOUNT:** U\*\*\*36550  
**ACCOUNT TYPE:** Organization (Advisor Client)  
**BASE CURRENCY:** USD

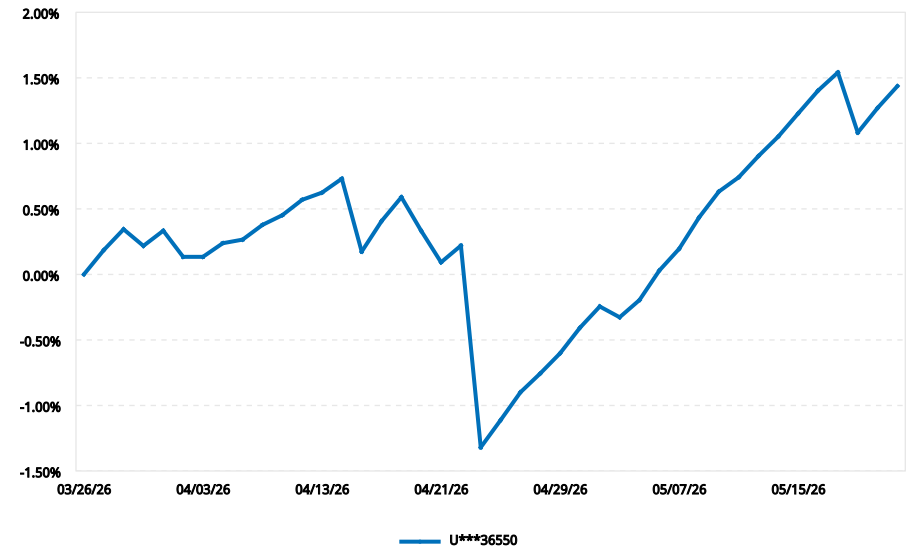
**ANALYSIS PERIOD**  
March 26, 2026 to May 22, 2026 (Daily)  
**PERFORMANCE MEASURE**  
TWR

▼ Historical Performance (Annualized)	3
▼ Time Period Performance Statistics	5
▼ Risk Measures	6
▼ Notes and Disclosure	7

History



Cumulative Since Inception

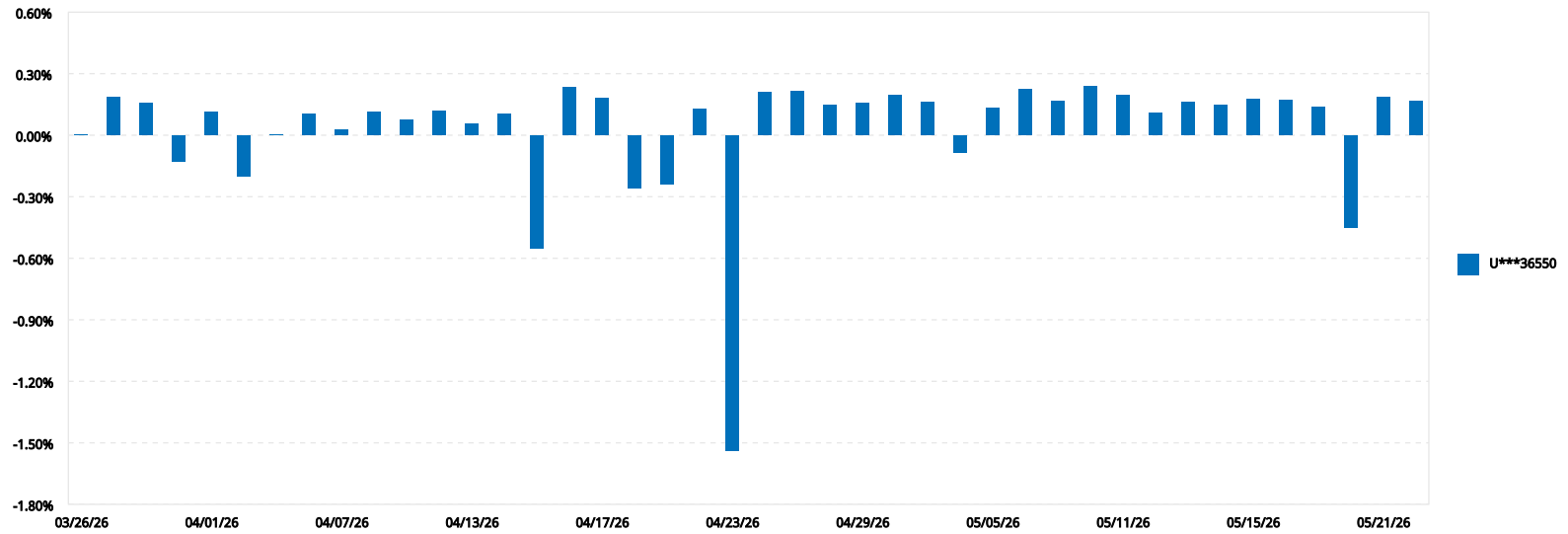


	MTD	QTD	YTD	Since Inception
U***36550	1.85%	1.22%	1.44%	1.44%

## Historical Performance (Annualized) (Cont.)

Analysis Period: March 26, 2026 - May 22, 2026 (TWR)

	2026
January	-
February	-
March	-
<b>Q1</b>	-
April	-0.62
May	-
June	-
<b>Q2</b>	-
July	-
August	-
September	-
<b>Q3</b>	-
October	-
November	-
December	-
<b>Q4</b>	-
<b>Year</b>	-

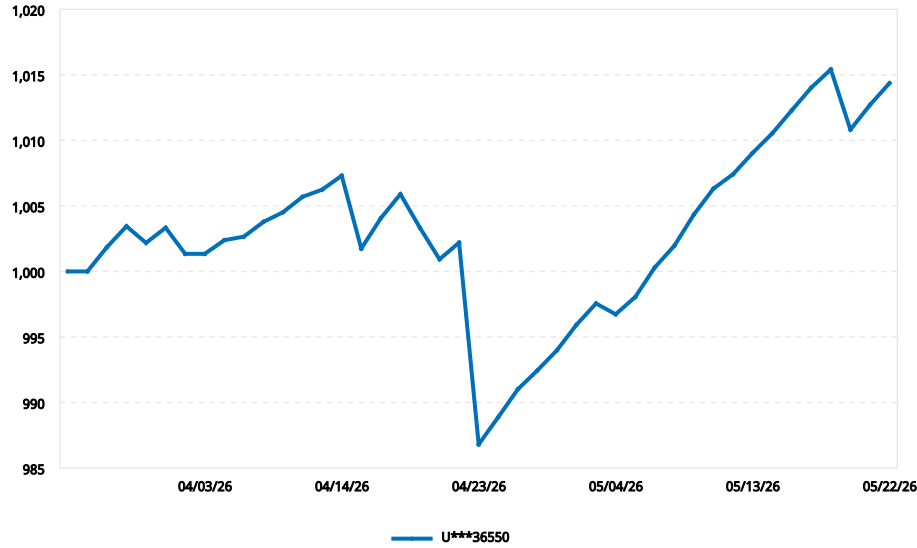


Time Period

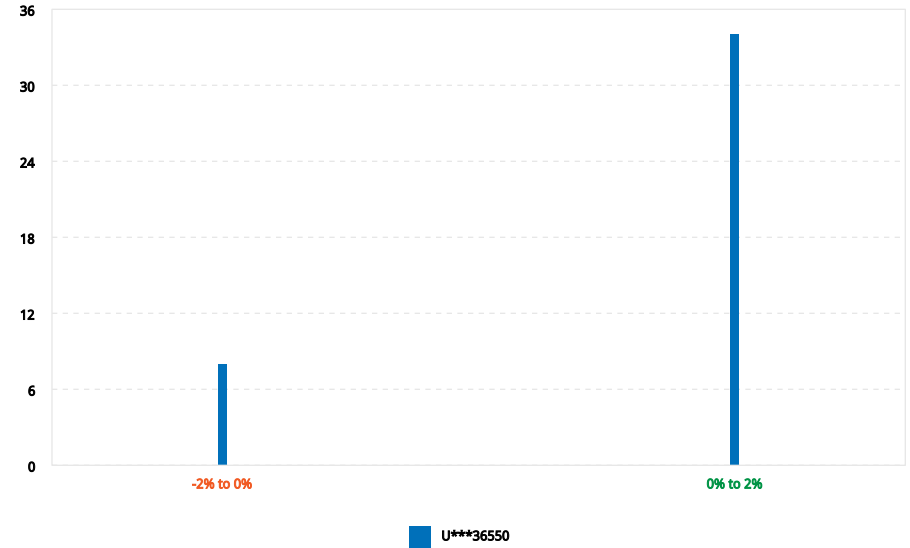
Date	U***36550 (%)
03/26/26	0.00
03/27/26	0.19
03/30/26	0.16
03/31/26	-0.13
04/01/26	0.12
04/02/26	-0.20
04/03/26	0.00
04/06/26	0.10
04/07/26	0.03
04/08/26	0.11
04/09/26	0.07
04/10/26	0.12
04/13/26	0.05
04/14/26	0.11
04/15/26	-0.55
04/16/26	0.23
04/17/26	0.18
04/20/26	-0.26
04/21/26	-0.24
04/22/26	0.13
04/23/26	-1.54
04/24/26	0.21

Date	U***36550 (%)
04/27/26	0.21
04/28/26	0.15
04/29/26	0.16
04/30/26	0.20
05/01/26	0.16
05/04/26	-0.08
05/05/26	0.13
05/06/26	0.23
05/07/26	0.17
05/08/26	0.24
05/11/26	0.20
05/12/26	0.11
05/13/26	0.16
05/14/26	0.15
05/15/26	0.17
05/18/26	0.17
05/19/26	0.14
05/20/26	-0.45
05/21/26	0.19
05/22/26	0.16
<b>Mean</b>	<b>0.03</b>

Value Added Monthly Index (VAMI)



Distribution of Returns



Risk Measures

	U***36550
Ending VAMI	1,014.37
Max Drawdown	2.04%
Peak-To-Valley	04/14/26 - 04/23/26
Recovery	13 Days
Sharpe Ratio	1.10
Sortino Ratio	1.21
Standard Deviation	0.30%
Downside Deviation	0.27%
Mean Return	0.03%
Positive Periods	34 (80.95%)
Negative Periods	8 (19.05%)

### General Notes

1. The Net Asset Value (NAV) consists of all positions by financial instrument (stock, securities options, warrants, bonds, cash, etc.). All non-base currency amounts are converted to the base currency at the close of period rate.
2. The gain or loss from future contracts settle into cash each night. The notional value is used when computing the contribution to return.
3. Dividend accruals, interest accruals, and insured deposits are included in cash amounts throughout the report.
4. Price valuations are obtained from outside parties. Interactive Brokers shall have no responsibility for the accuracy or timeliness of any such price valuation.
5. Data from Thomson Reuters Business Classifications and Lipper Global is used to derive our sector classifications. Funds with assorted sector allocations are classified as Broad.
6. Amounts are formatted to two decimal places. If amounts are greater than two decimal places, Interactive Brokers uses "half-even" rounding. This means that Interactive Brokers rounds such amounts up to the nearest even number.
7. For accounts opened and funded before 2009, reports with a time period of Since Inception will only include data going back to January 1, 2009. This includes some default reports and both Historical Performance reports.
8. If you have elected to trade cryptocurrency/digital asset products at Crypto Provider through the Interactive Brokers platform, for your convenience your positions in your linked account at Crypto Provider are reflected in PortfolioAnalyst in connection with your Interactive Brokers account.

### Section Specific Notes

1. Risk Measures: Historical US 3 Month Treasury Bill rates are used as the risk free rates when calculating Alpha, the Sharpe ratio, the Sortino ratio, and the downside deviation.

### Disclosure

This portfolio report was generated using Interactive Brokers' PortfolioAnalyst tool, which allows Interactive Brokers clients to generate analyses of their accounts using market data provided by third parties along with trade and account data contained in Interactive Brokers' systems. This report is for information purposes only and is provided AS IS. Interactive Brokers makes no warranty of any kind, express or implied, as to this report and its contents. The data provided for use in the PortfolioAnalyst tool is believed to be accurate, but completeness and accuracy of the information is not guaranteed, and Interactive Brokers has no liability with respect thereto. The data regarding accounts held outside of Interactive Brokers is obtained either directly from your input or from the financial institutions holding those accounts through a third-party service provider and Interactive Brokers has NOT reviewed its accuracy.

The material in this report is intended only as a reference and should not be relied upon for the maintenance of your books and records for tax, accounting, financial, or regulatory reporting or for any other purposes. This report is not an offer or a solicitation of an offer to buy or sell any security. This material does not, and is not intended to, take into account the particular financial conditions, investment objectives, or requirements of individual customers. Before acting on any material within this report, you should consider whether it is suitable for your particular circumstances and as necessary, seek professional advice.